

## E.P.C. Artificial Reef Program

The Artificial Reef Program is administered by the Environmental Protection Commission of Hillsborough County and was started October 23, 1986. The goal of the Artificial Reef Program is to increase habitat diversity by providing hard-bottom substrates and communities which might not otherwise be available in Tampa Bay. The reefs also provide additional fishing opportunities for the sport fishing public in the bay area. Fishing techniques vary from person to person and day to day. In general, the artificial reefs should be fished just like a ledge or a wreck. The following techniques usually get results:

- Drifting across the reef area
- Using a mix of live and artificial baits
- Laying a chum line or chum bag
- Anchoring near but not in the materials to avoid snags

**Note:** Increased hurricane and tropical storm activity over the last few years has made it impractical and expensive to maintain buoys on each reef. Only the Egmont Key Reef is now marked with a yellow buoy on the center of the reef site with the phrase "Center Fish Haven" on it. ***Please do not tie-up to the marker buoy!*** This causes additional strain on the mooring system and shortens the life of the buoy. If you are confident you are on the reef site but, you can't find the buoy or if you find a buoy where it is not supposed to be,



please phone us at 813-627-2600 Ext. 1011 or e-mail us at [epcinfo@epchc.org](mailto:epcinfo@epchc.org).

Some materials within the reef area may be relatively new and therefore not yet a productive "fishing hole". For specific information on each site, please contact the Artificial Reef Program Coordinator at 813-627-2600 Ext. 1011 or e-mail us at [epcinfo@epchc.org](mailto:epcinfo@epchc.org). Reef information and a map of locations are also available on-line at [www.epchc.org](http://www.epchc.org).

## Practice Responsible Fishing!

- ♦ Increase fish stocks through **Catch and Release**.
- ♦ Keep only the fish you intend to eat.
- ♦ Release alive **ALL** fish you don't want. (Even catfish serve an important ecological function!)
- ♦ Stow trash and fishing line in proper waste containers so they don't trap and kill wildlife.
- ♦ Vary your take for the dinner table. You may be surprised by the flavor of different fish.
- ♦ Be courteous to your fellow fishermen. There's plenty of room for everyone.

### Just a Few of the Fish Found on Artificial Reefs in Tampa Bay:

Sheepshead	Mangrove Snapper	Snook
Grouper	Black Sea Bass	Mackerel
Cobia	Tarpon	Flounder
Black Drum	Goliath Grouper	Jacks
Hogfish	Trout	Redfish

### More Than 60 Species In All !

The staff of the Artificial Reef Program frequently speaks to fishing clubs, schools and many other civic groups in the Tampa Bay area. If you would like to schedule a speaker for your next meeting, please give us a call at 813-627-2600 Ext. 1011 or e-mail us at [epcinfo@epchc.org](mailto:epcinfo@epchc.org)

The Artificial Reef Program is funded by the Environmental Protection Commission's Pollution Recovery Fund. This fund was established to specifically address environmental restoration, pollution prevention and cleanup efforts in Hillsborough County.



The program also relies on generous donations of materials, as well as construction and transportation services, from local marine construction contractors.



**Richard D. Garrity, Ph.D.**  
**Executive Director**

## E.P.C. ARTIFICIAL REEF PROGRAM

The Artificial Reef Program is administered by the Environmental Protection Commission of Hillsborough County and was started October 23, 1986. The goal of the Artificial Reef Program is to increase habitat diversity by providing hard-bottom substrates and communities which might not otherwise be available in Tampa Bay. The reefs also provide additional fishing opportunities for the sport fishing public in the bay area. Fishing techniques vary from person to person and day to day. In general, the artificial reefs should be fished just like a ledge or a wreck. The following techniques usually get results:

- Drifting across the reef area
- Using a mix of live and artificial baits
- Laying a chum line or chum bag
- Anchoring near but not in the materials to avoid snags

Information in this publication is current as of **April 2001**. It includes descriptions of existing reefs, including LORAN-C, Latitude/Longitude and distance/compass headings to reefs from familiar landmarks.

*(Note: All reefs except Ballast Point Pier Reef and Picnic Island Pier Reef are marked with yellow buoys on the center of the reef site and have the phrase "Center Fish Haven" on them.) Please do not tie-up to the marker buoys! This causes additional strain on the mooring system and severely shortens the life of the buoy. If you are confident you are on the reef site but, you can't find the buoy or if you find a buoy where it is not supposed to be, please phone us at 813-272-5960 or e-mail us at [reefs@epchc.org](mailto:reefs@epchc.org).*

Some materials within the reef area may be relatively new and therefore not yet a productive "fishing hole". For specific information on each site, please contact the Artificial Reef Program Coordinator at 813-272-5960.

# Artificial Reefs



## Find 'Em and Fish 'Em In Tampa Bay!

[Drop us a line...](#)



[or visit us on-line...](#)



### 1. TED ADAMS REEF (fka Port Tampa Reef)



- 0.6 nm West of Port Tampa/ Picnic Island Fishing Pier.
- LORAN C: 14257.7 / 44631.9
- Latitude: N 27° 51.65'
- Longitude: W 82° 33.79'
- Heading: 300° from Picnic Island
- Natural depth: 24 ft.
- Minimum navigational clearance: 10ft. (MLLW)
- Started: March 21, 1987.
- Reef Materials: 4 steel barges, concrete pilings and slabs.
- Reef Area: 100yds. (East/West) x 400yds. (North/South)

### 2. BAHIA BEACH REEF

- 1.8 nm West of Mangrove Pt., North of Bahia Beach.
- LORAN C: 14245.8 / 44560.3
- Latitude: N 27° 44.89'
- Longitude: W 82° 30.92'
- Heading: 305° from Bahia Beach Marina channel.
- Natural depth: 18-24 ft.
- Minimum navigational clearance: 10ft.(MLLW)
- Started: September 7, 1987
- Reef Materials: Concrete pilings, slabs, and culvert pipe.
- Reef Area: 200yds. (East/West) x 400yds. (North/South)

### 3. BALLAST POINT PIER REEF

- 4 Reef areas along the sides of the Ballast Point Fishing Pier at Ballast Point Park.
- LORAN C: 14270.9 / 44601.5
- Latitude: N 27° 53.36'
- Longitude: W 82° 28.80'
- Started: December 1987.
- Reef Materials: concrete pilings, slabs, culvert, benches.
- Reef Area: 100' x 200' each. Near edge of the reefs are 50' from the pier.

### 4. PORT MANATEE REEF

- 1.5 nm Northwest of Port Manatee.
- LORAN C: 14225.6 / 44557.2
- Latitude: N 27° 39.79'
- Longitude: W 82° 34.74'
- Heading: 330° from Port Manatee
- Natural Depth: 19-21ft. (MLLW)
- Minimum navigational clearance: 8ft. (MLLW)
- Started: October 16, 1990
- Reef Materials: Concrete pilings, bridge decking, rubble
- Reef Area: 400yds. x 400yds.

### 5. PICNIC ISLAND PIER REEF

- 100ft West of Picnic Island fishing pier.
- LORAN C: 14257.9 / 44648.5
- Latitude: N 27° 51.41'
- Longitude: W 82° 33.27'
- Heading: 250° from Picnic Island Pier
- Natural depth: 16-18 ft.(MLLW).
- Minimum navigational clearance: 10ft. (MLLW).
- Started: July 15, 1991
- Reef Materials: 10 Concrete Pyramids, 1 Reef Ball
- Reef Area: 75ft (North-South) x 50ft (East-West).

### 6. COURTNEY CAMPBELL REEF

- 0.4 nm. South of the Tampa side of the Courtney Campbell Causeway.
- LORAN C: 14267.9 / 44702.0
- Latitude: N 27° 57.81'
- Longitude: W 82° 36.86'
- Heading: 180° from Courtney Campbell boat ramp.
- Natural depth: 16ft. (MLLW).
- Minimum navigational clearance: 8ft. (MLLW).
- Started: July 1991
- Reef Materials: Concrete pilings
- Reef Area: 400yds (East/West) x 200yds. (North/South)

### 7. HOWARD FRANKLAND REEF

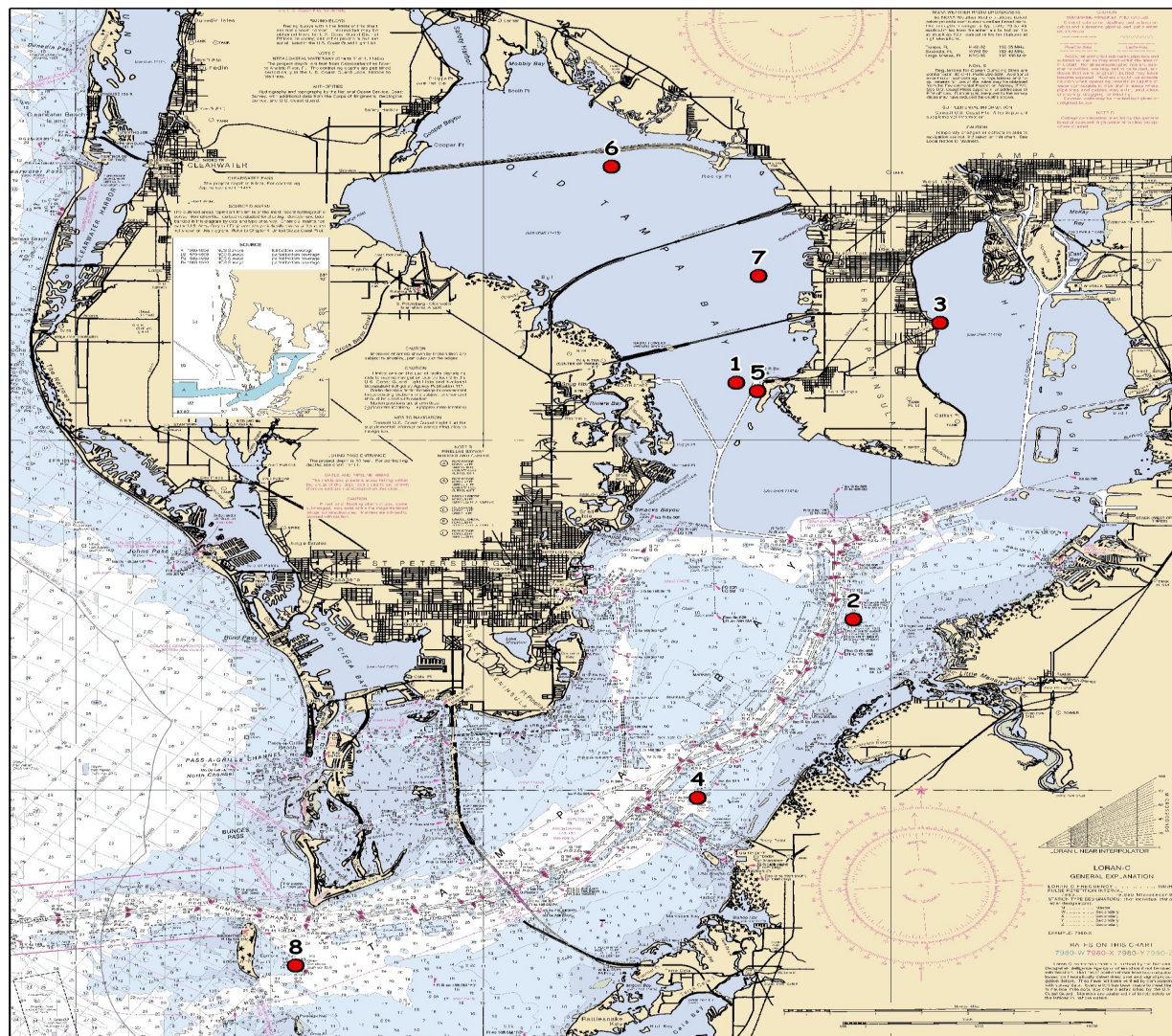
- 1.0 nm. West of the Interbay Peninsula, between the Howard Frankland and Gandy Bridges.
- LORAN C: 14266.5 / 44649.4
- Latitude: N 27° 54.70'
- Longitude: W 82° 33.25'
- Heading: 350° from main span of Gandy Bridge.
- Natural depth: 16ft.(MLLW).
- Minimum navigational clearance: 8ft.(MLLW).
- Started: December 23, 1991
- Reef Materials: Concrete pilings, bridge supports.
- Reef Area: 400yds. (North/South) x 200yds. (East/West)

### 8. EGMONT KEY REEF

- 1.5 nm. from Egmont Key Lighthouse.
- LORAN C: 14193.5 / 44606.8
- Latitude: N 27° 35.00'
- Longitude: W 82° 44.60'
- Heading: 190° from Southern tip of Mullet Key.
- Natural depth: 17-23ft.(MLLW)
- Minimum navigational clearance: 10ft.(MLLW).
- Started: June 26, 1999
- Reef Materials: Concrete bridge, pyramids, pipe.
- Reef Area: 400yds. x 400yds.

### **WARNING !**

- \* Conditions at the reef sites, such as strong tidal currents, poor water visibility and entanglements may make diving hazardous.
- \* Fishermen may choose to anchor away from reef structures to avoid entanglement of anchors and/or tackle.
- \* Compass headings are approximate. Chart should not be used for navigation.



Reef locations and information are available at:  
[www.epchc.org](http://www.epchc.org)

EPC Artificial Reef Program  
Environmental Resources  
Management Division  
3629 Queen Palm Dr.  
Tampa, FL 33619  
Phone: 813-627-2600

